



Wellbeing Solutions for a Changing Workforce



Our Services

We help you manage the health and well-being of your population – every person – everywhere.



Biometric/Biomarker Screenings

Chronic disease screenings, coaching and next steps management. Have the tools to identify and manage health risks early.



Personal Risk Management Coaching

US Wellness' clinical support team follows at risk patients through a personalized care plan.



Vaccinations

Onsite flu shots and vouchers at 27,000 retail partners and COVID vaccination tracking.



Wellbeing Assessment

Measures wellbeing capital within a workforce population and serves as a baseline for future trend analysis.



Health Staffing and Coaching

Health and wellness staff perform onsite services and coaching



Wellness Portal

Challenges, incentive tracking, self-guided learning, social messaging platform, app integration.

Your Pathway to Success

Your US Wellness account management team is with you every step of the way!



Biometric Screenings

We have a national footprint for screenings to make screenings accessible – onsite or offsite.



Onsite Screenings

Appointment scheduling, onsite screening and coaching, personal and aggregate results reporting.



Home Test Kit

Request a kit to complete screening at home.



Lab Voucher

Complete screening at one of our community retail partners.



Physician Form

Visit your doctor and submit results for credit and reporting.

User Experience

US Wellness creates a comfortable and accessible setting at workplaces nationwide.



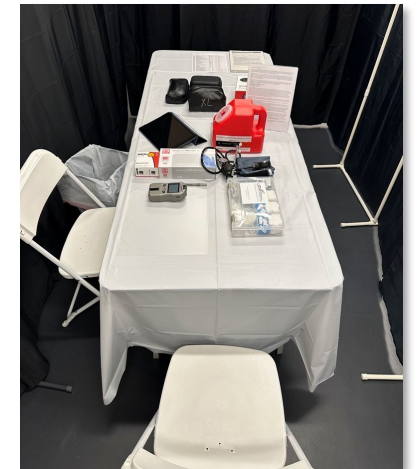
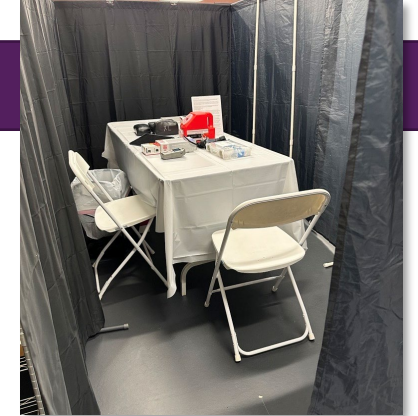
Pre-Event

- Web-based appointment scheduling
- Customer support (phone and email)
- Admin scheduling
- Confirmation messaging



Day of Event


- US Wellness setup and management of testing area
- Participants welcomed by US Wellness staff
- One-station testing creates a private space
- Counseling on results by licensed and certified health professionals
- Walk-ins welcome
- Digital test management ensures security and privacy
- Individuals receive an email to login after their screening to view results



Cloud-Based Real Time Employee User Interface

Custom online scheduling and real-time results reporting cloud-based user interface (web and mobile)

- Cloud-based platform to request services, see results
- Secure user account creation
- Custom page setup and messaging
- Appointment message reminders
- Real time user access to appointment details and results from testing via secure login
- Participation and status reports
- Users retain login year-to-year so there is no need to re-enroll



Live healthier, be stronger, and achieve more!

In Person Appointment	<p>Schedule an appointment for a screening near you. If you need to change or cancel your appointment you may do so anytime.</p> <p>Fast (no food or drink other than water) for 8 hours or more before your test. If you take medications in the morning, take them as directed.</p> <p>Arrive for your screening appointment at the time you choose. We will perform your screening tests and talk through your results with you at your appointment.</p>
Home Test Kit	<p>Order a home test kit to be sent to your home.</p> <p>Your kit will arrive within 3-7 business days. When your kit arrives, follow the instructions in your kit or watch the instructional video https://youtu.be/5NV2tUHU-G0</p> <p>Return the kit using the postage paid envelope.</p>
PCP Form	<p>Download the physician form.</p> <p>Schedule an appointment for your annual preventive exam with your doctor. Take the downloaded form to your appointment and ask your doctor to complete the downloaded form.</p> <p>If you have already visited your doctor this year, check that your exam was within the required timeline to get credit for your wellness tests.</p>

Promotional Materials

Let US Wellness lead the way with proven promotional and campaign communications that get the job done!

All our campaigns support Diversity, Equity and Inclusion. Imagery and content is customized to the employer and its workforce.

Materials include:

- Email campaign
- Custom scheduling site using Salesforce Customer Experience platform
- Posters
- Flyers
- Handouts



Schedule Your [TYPE OF SERVICE] Today!

[Company] has made an investment in your health by offering you a [biometric screening & flu shot]. Screenings can identify your risk for common chronic disease.

Date:

Time:

Location:

Make a separate flu and biometric appointment

Wellness Screening Includes:

- Blood Pressure
- Body Mass Index
- Total Cholesterol
- HDL Cholesterol
- Total Cholesterol/HDL Ratio
- Glucose
- Health Counseling/Results

Unable to attend?

[If you are unable to attend the onsite screening, you can request a lab voucher to be used at LabCorp or CVS Minute Clinic or order a test kit to be used at home. Visit: [CompanyName.uswellness.com](https://www.CompanyName.uswellness.com)

Deadline to visit a lab or request a home test kit is: [mm/dd/yyyy](#)



Schedule your screening appointment at:
[CompanyName.uswellness.com](https://www.CompanyName.uswellness.com)

Need help getting started?
Contact US Wellness at:
support@uswellness.com
or 888-926-6099 x900



Workforce Wellbeing Assessment

The impacts of current economic and social conditions on personal and population wellbeing are critical elements in organizational planning for 2023 and beyond.

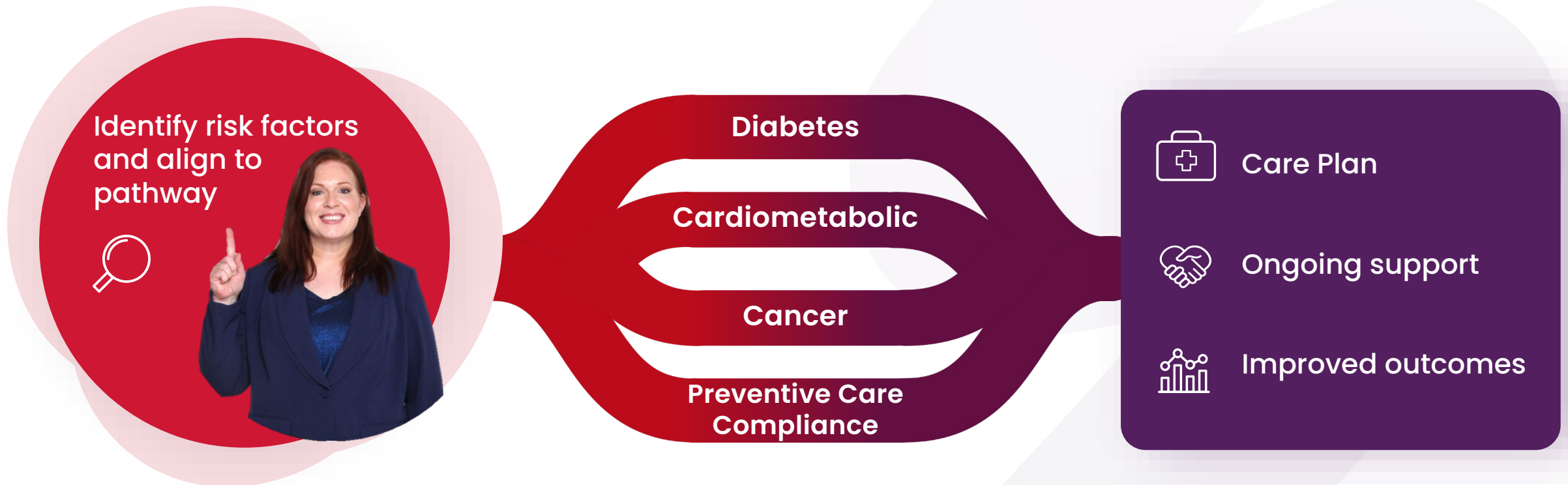
Join us in a unique study measuring the impact of lifestyle, social and economic factors, substance use, and stress management on the health and wellbeing of your workforce. Gain insight into the resilience of your workforce and your organization. Outcomes analysis and recommendations include:

- Individual wellbeing assessment score and recommendations
- Workforce wellbeing report comparing outcomes to employers nationwide who are focused on the future of their workforce and exceeding business goals by measuring trends in workforce wellbeing capital
- Recommendations to build wellbeing capital



Personalized Coaching – Closing the Gap

Our targeted clinical outreach offers the personal support necessary to increase compliance and adherence.



Specialized Testing Aids Coaching and Maintenance

Access to preventive and evaluative testing based on condition and biomarker testing.

Supporting risk analysis *and* peace of mind

- ✓ Diabetes: Hemoglobin A1c, weight and body composition, and Prediabetes Risk Assessment Reflux
- ✓ Pharmacogenomics: Testing relative response to Rx to lower drug reaction risks and improve disease management
- ✓ Cardiometabolic: Metabolic assessment panel and five hereditary panels
- ✓ Cancer: Breast Cancer Panel, Expanded Breast and Ovarian Cancer, Lynch Syndrome, Gastrointestinal Polyposis, and Colorectal Cancer

Pharmacogenomics



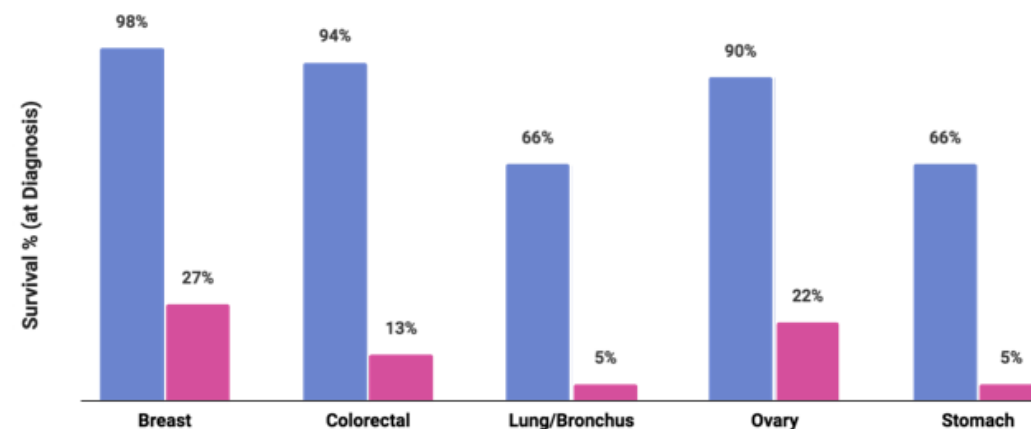
A Breakthrough for Cancer Detection

The Galleri® multi-cancer early detection blood test can detect 50+ cancers via a shared cancer signal.



- Cancer detection is the #1 employee-ranked health benefit
- Only 30% of cancers can be detected with screening when screenings are performed regularly and effectively
- Early cancer detection saves lives and costs 3x less than late-stage cancer

Stage I vs. Stage IV 5 Year Survival Rate



1. Market research data on file GA-2022-0083-MRS AACR Releases Report Outlining Impact of COVID on Cancer Research and Patient Care
2. Incident cancers with USPSTF A or B recommended screening. SEER Stat Database: Incidence - SEER 18 Regs Research Data, Nov 2017 Sub. Includes persons aged 50+ diagnosed 2006-2015.
3. Klein EA, Richards D, Cohn A, et al. Clinical validation of a targeted methylation-based multi-cancer early detection test using an independent validation set. Ann Oncol. 2021;32(9):1167-1177. Doi: 10.1016/j.annonc.2021.05.806. Study demographics included 314 respondents, age 40+, who are employed full-time at larger organizations

*Galleri does not detect all cancers and all cancers cannot be detected in the blood. False positives and false negatives do occur

Population Risk Report

Your population report compares your group with employers like you and helps you plan for future needs.

Population Risk Report



US Wellness' national average risk for heart disease, stress management and diabetes increased exponentially over the past three years, signaling a dramatic negative shift in population health far beyond any other cohort trend in recent history.

	Percent at Risk	➔	
Health Condition	2018	2022	% Change
Obesity	--		--
Diabetes	18%	26%	8%
Hypertension	54%	66%	9%
Heart Disease	26%	33%	7%

[Organization] Utilization and Outcomes

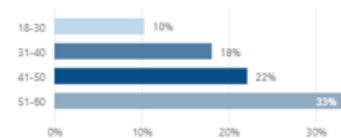
Program Utilization

Relation	Labcorp	Onsite	PCP
Employee	15	227	372
Spouse	16	45	253
Unmatched	10	45	74

Chronic Disease Outcomes and Economic Impact

	Moderate		High	
	Percent	Total	Percent	Total
Obesity	37%	416	42%	472
Hypertension	37%	416	17%	191
Diabetes	70%	787	60%	674
Heart Disease	40%	450	15%	169

Population Age Range



Metabolic Syndrome



	Additional Days Missed	Base Absenteeism Cost	Team Spillover Cost	Estimated Total Absenteeism Cost
Obesity	515	\$ 135,964	\$ 138,025	\$ 273,989
Hypertension	740	\$ 195,490	\$ 198,452	\$ 393,942
Diabetes	2031	\$ 536,202	\$ 544,326	\$ 1,080,528
Heart Disease	N/A			

Specialty Testing

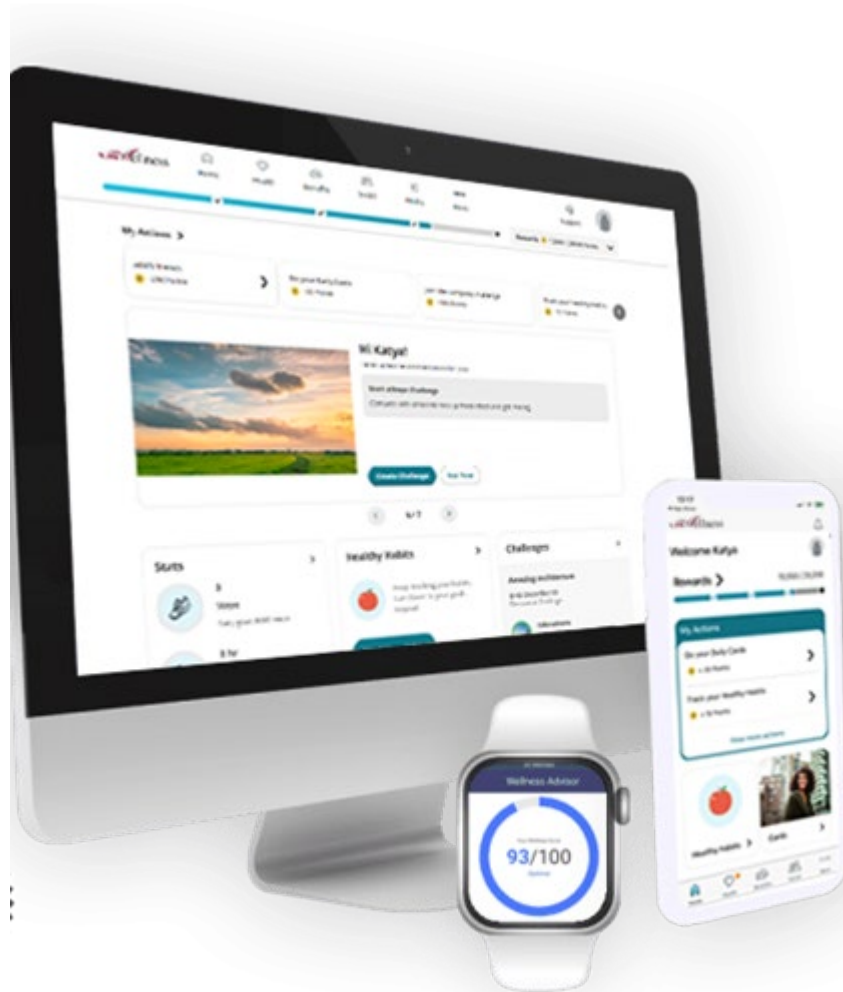
	Moderate		High	
	Percent	Total	Percent	Total
Hemoglobin A1C	4%	45	5%	56
Prostate Specific Antigen	1%	11	1%	11
Cotinine/Nicotine			6%	67

- Participation reports delivered weekly
- Aggregate (deidentified) population health report delivered at designated interval
 - Analysis of at-risk population by moderate and high risk by preventive condition offers opportunity to focus wellness programming to reduce future risk
 - Projected absenteeism cost by preventable condition
 - Metabolic Syndrome risk (risk of co-morbidity conditions)
 - Absolute Cancer risk
 - Comparison study of US Wellness' insured, employed, working age baseline data
 - Cohort studies when >1 year of data is available

Wellness Portal



Our virtual wellness home allows employees personalize wellness content and engage in your wellness community.



Custom User Experience

Identify and manage health risks with personalized content and experience.

Wellness Challenges

Regular messaging and design elements make challenges a key element of program engagement.

Incentive Tracking

Custom incentive training of activities, games, and challenges earn points toward goals or for use in our store.

Journeys[®]

A first step in reaching personal health goals, Journeys[®] are daily, self-guided courses that build healthy habits.

Wellness Portal: Leading the Way

A simplified and orchestrated health and wellbeing experience for all.



Mission

Changing lives
for good



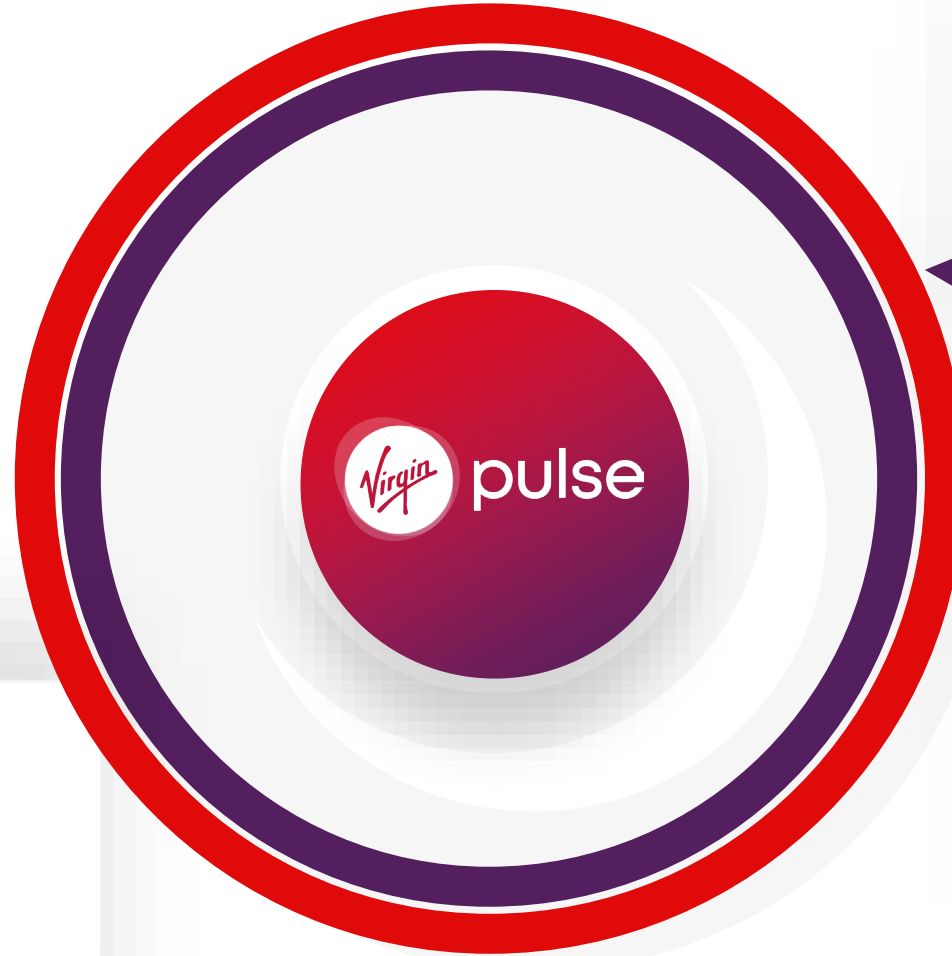
Solution

A simplified "one-
stop" wellbeing
experience



Results

50%+ avg
engagement & lower
overall cost of care



Activation

55%
higher activation

Engagement

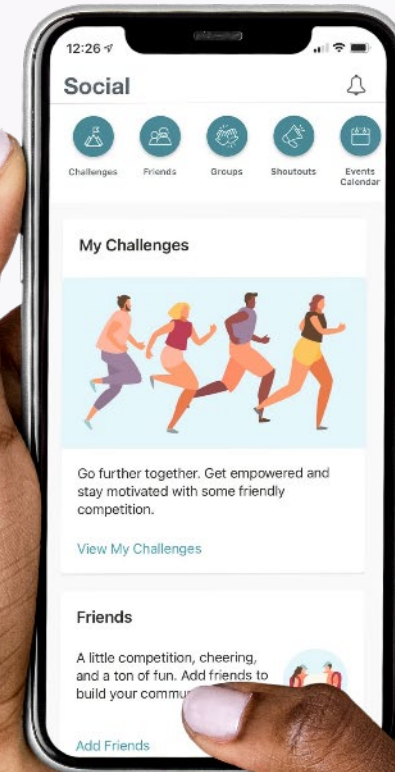
7x
more program use

Gamification

Create healthy behaviors while having fun with the social components of the platform, like challenges.

Challenges

- ✓ Company-wide, team-based, or individual goals
- ✓ Track activity, steps, mindfulness, nutrition, or other habits
- ✓ Immersive and interactive experience
- ✓ Easy device integration



Integrated Partners

Enables a connected, whole-person wellbeing experience.

Access to top digital health and wellbeing partners, at one low price.

VP+ gives you the flexibility to turn on partners that fit the needs of your population, without adding administrative burden. Mix and match based on your strategy and the unique needs of your population.

Wellbeats

foodsmart

Aaptiv



oviahealth

ex program

Enrich

whil.

usWellness



US Wellness



Contact:

Email: info@USWellness.com

Phone: 301-926-6099

USWellness.com