

**Caring
for you
in all ways.
Always.SM**





Educate, engage, and advocate for every member, every time

Conversations with compassionate, knowledgeable advocates allow your people to build rapport and relationships with health and well-being experts who will support them through any health challenge, no matter what. By establishing trust and personal connections, members feel comfortable coming to us with a range of important issues, from wanting to make a healthy lifestyle change and achieve better well-being to confiding in us not just about needing help navigating the healthcare system, but also about how overwhelmed it makes them feel.

Every conversation and engagement is powered by heart

Our award-winning digital experience is also built with care, so your members get another level of convenient, impactful help. In every interaction, no matter how or where members connect with us, educating, engaging, and advocating for them provides the high level of support necessary to drive healthy behavior changes that lead to better health outcomes and lower costs.



Educate to drive awareness

Educating members sparks conversations that drive awareness of health risks, available services, and that their caring team of advocates is ready to provide personal support.



Engage at every interaction

Members are engaged at every touch point, whether through conversations, personalized communications, or while exploring our digital experience.



Advocate every step of the way

Building relationships with our members through personal exchanges shows them that they can trust us to advocate for them, handling their sensitive concerns with care and compassion.



People who care about people

Our compassionate team is comprised of healthcare experts who establish meaningful relationships with members and provide personalized help. They're supported by a powerful digital experience and intuitive technology.

Your people have access to highly trained clinical, benefits and other healthcare experts 24/7. Your members get one-on-one help from caring advocates to coordinate with health plans and providers, understand coverage, get help with wellness and emotional issues, reach the right resources, and get answers to their questions.

Caring for the whole family

Employees, spouses/partners, dependents, parents, and parents-in-law can all use our services.

A whole-person population health solution for everyone

With Health Advocate, you get the deepest level of care and support for your people by providing a fully-integrated experience that covers physical, social, financial, and emotional health.

24/7 Support • 250+ Languages • HIPAA-Compliant
NCQA-Certified



GUIDE

Health Advocacy & Navigation

Support for navigating the healthcare system, which maximizes benefit utilization and reduces health costs.



ENGAGE

Clinical Care Management

Physician-guided care management, improving health and lowering costs for high-cost claimants and members with chronic conditions.



EMPOWER

Life & Emotional Health (EAP)

Confidential access to our team of Master's-level Care Managers to maximize productivity and reduce mental health costs.



INSPIRE

Personalized Well-Being

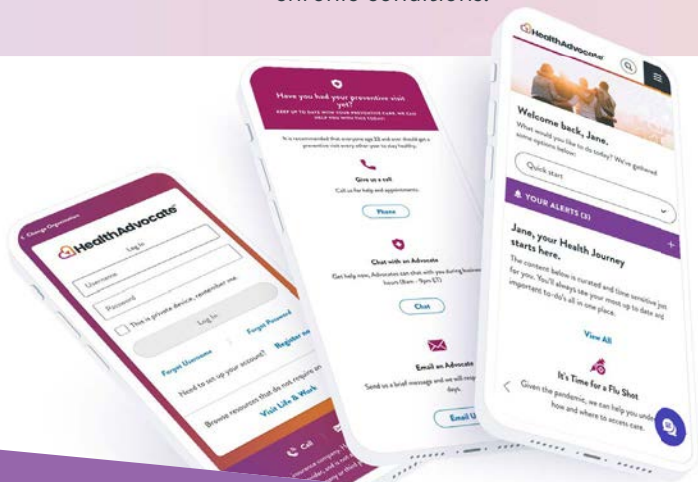
Inclusive program with attainable goals meets people where they are, keeping medical costs down and health risks low.



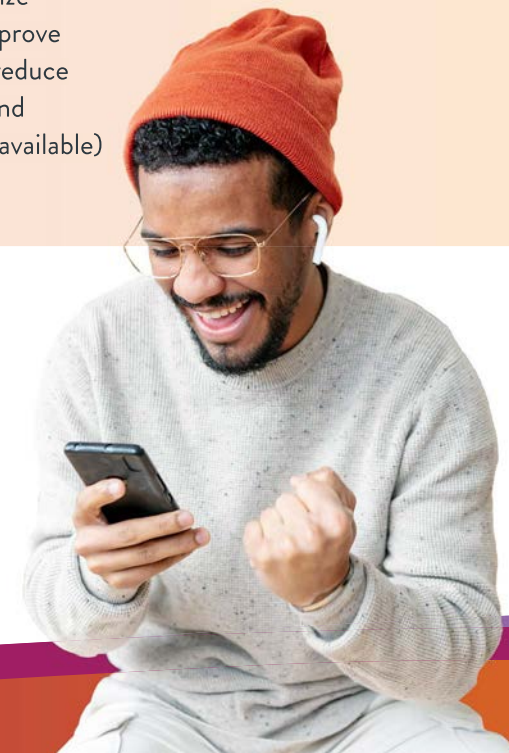
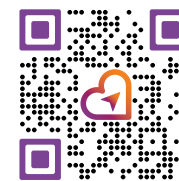
PROTECT

Health Screenings & Vaccinations

Promote positive behavior changes, maximize productivity, improve outcomes, and reduce costs. (Onsite and remote options available)



Scan me to learn more!





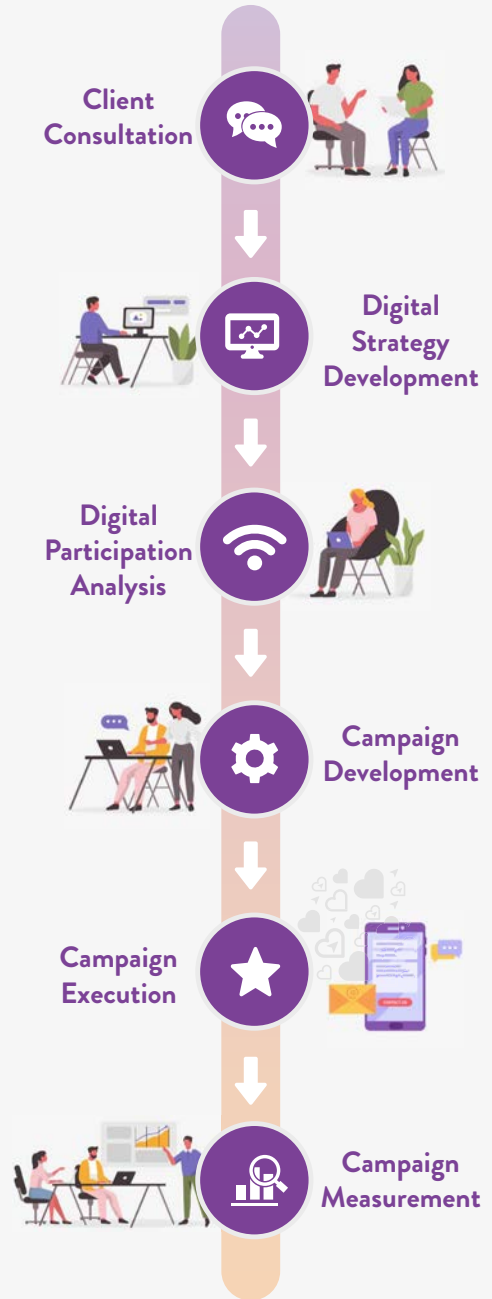
AI-powered digital engagement

Delivers personalized, data-driven advice and recommendations directly to members. This helps close gaps in care, educate members on their health and benefits, connect them to the right benefits and support, increase patient/provider collaboration, and change health and lifestyle behaviors.

Schedule your demo today!

866.799.2655

info@HealthAdvocate.com



Health Advocate makes healthcare easier for over 12,500 organizations and their members by leveraging a combination of personal support, data and technology to engage people in their health and well-being. [HealthAdvocate.com](https://www.healthadvocate.com)

©2024 Health Advocate HA-B-2401001-IBRO