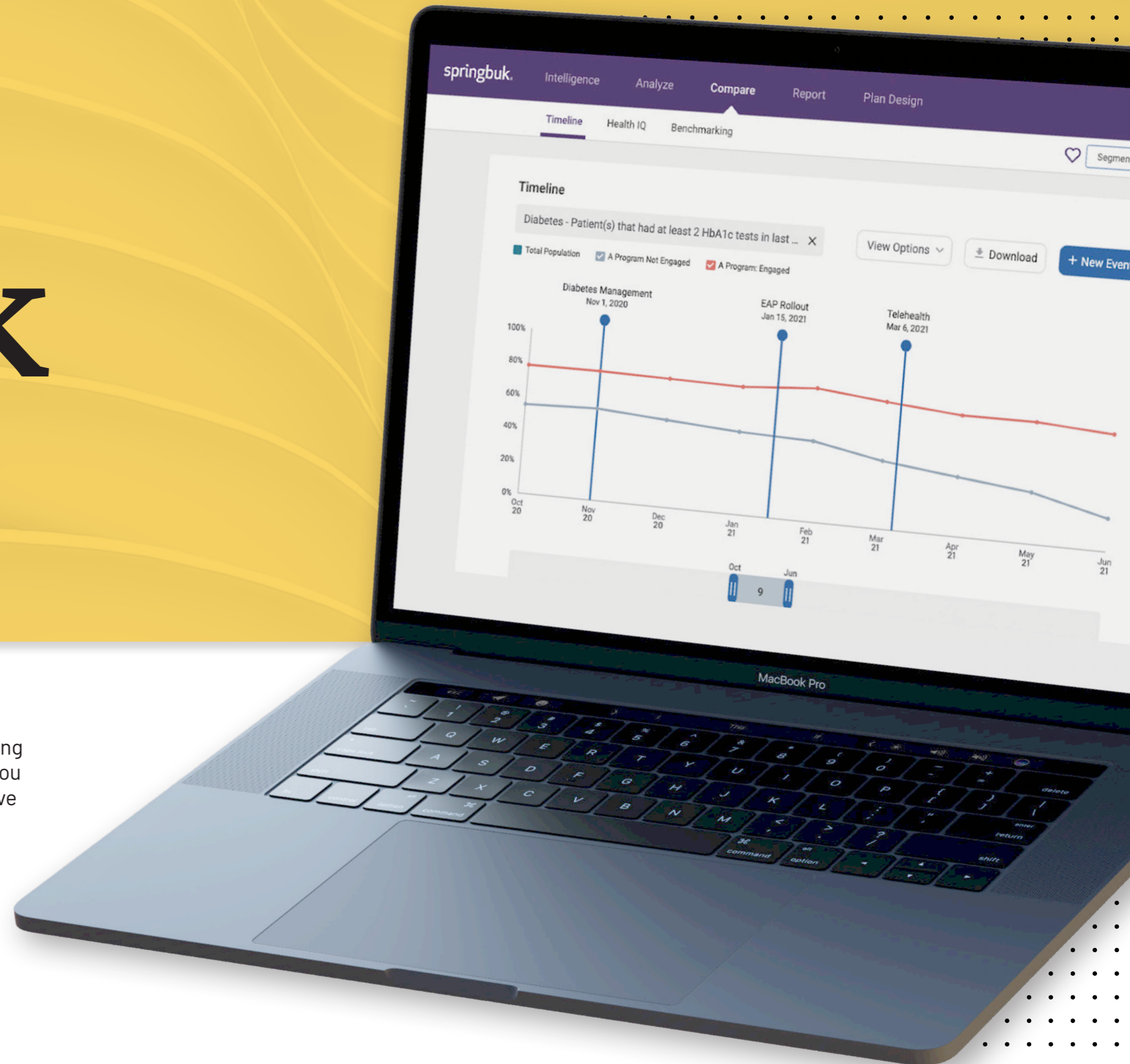


# Springbuk Timeline™



## Benefits Plan Offerings Change. Can You Track Their Impact?

You work hard to analyze your population's health claims data and program reports to understand which strategies have been most effective. These analyses and reports help provide the building blocks for new point solutions or plan changes you may introduce.

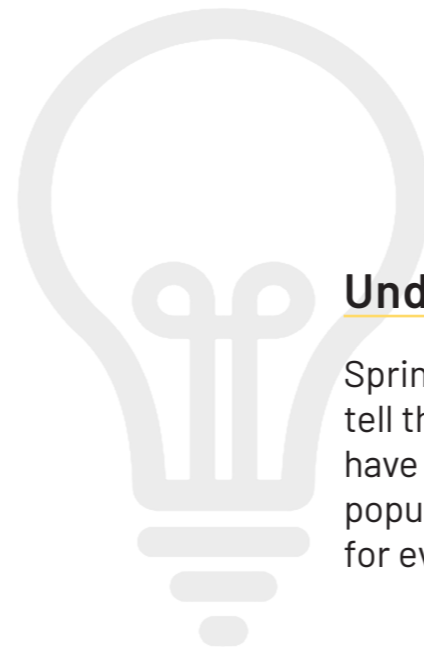
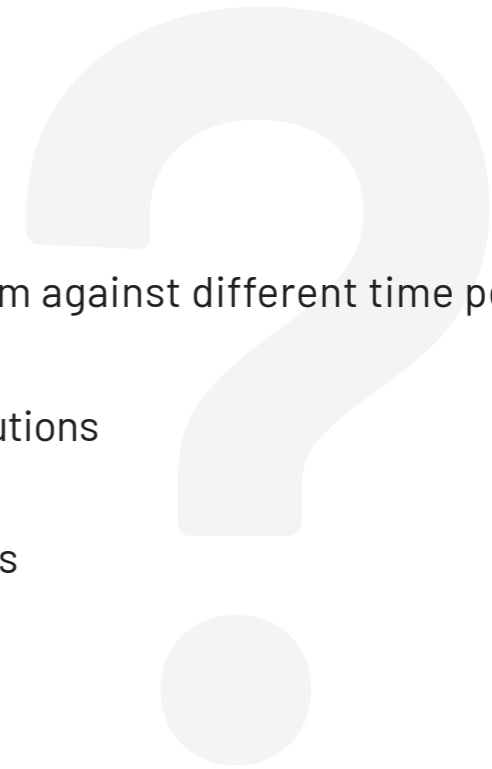
But with all the time and effort spent ensuring your benefits fit your employees' needs, do you have the tools to track if these changes move the needle the way you intended?

Without understanding the impact, these changes merely become another drop in the benefits bucket.



## Can your solution:

- 1 Monitor the impact of plan changes over time and compare them against different time periods
- 2 Compare the impacts of different types of programs or vendor solutions
- 3 Create employee cohorts to track progress and compliance gaps



### Understand What Drives the Greatest Impact

Springbuk Timeline™ helps you see and tell the story of the interventions that have driven the greatest impact for your population's health. Success is different for everyone.

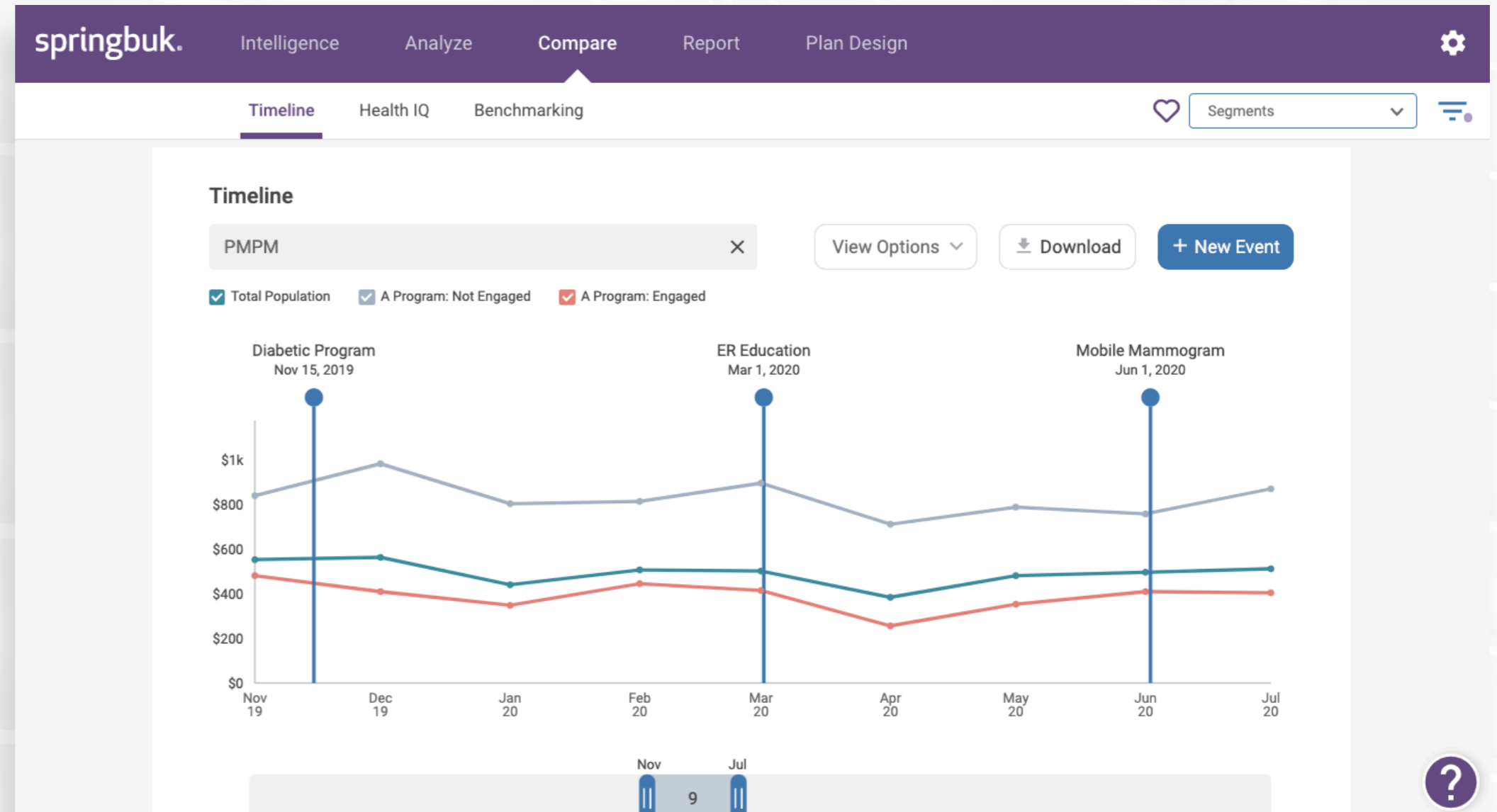
For you, is it reduced Rx cost, increased diabetes care compliance, or maybe fewer ER visits? Perhaps it's increasing cancer screenings or reducing hospital readmissions?

# Springbuk Timeline™ was built to give you the tools to:

1

Monitor program success across multiple metrics, including:

- › Medical and Rx cost
- › Compliance rates of preventive and chronic care
- › Utilization of ER, inpatient, outpatient, pharmacy, and imaging services
- › Preventative cancer screenings
- › Risk scores

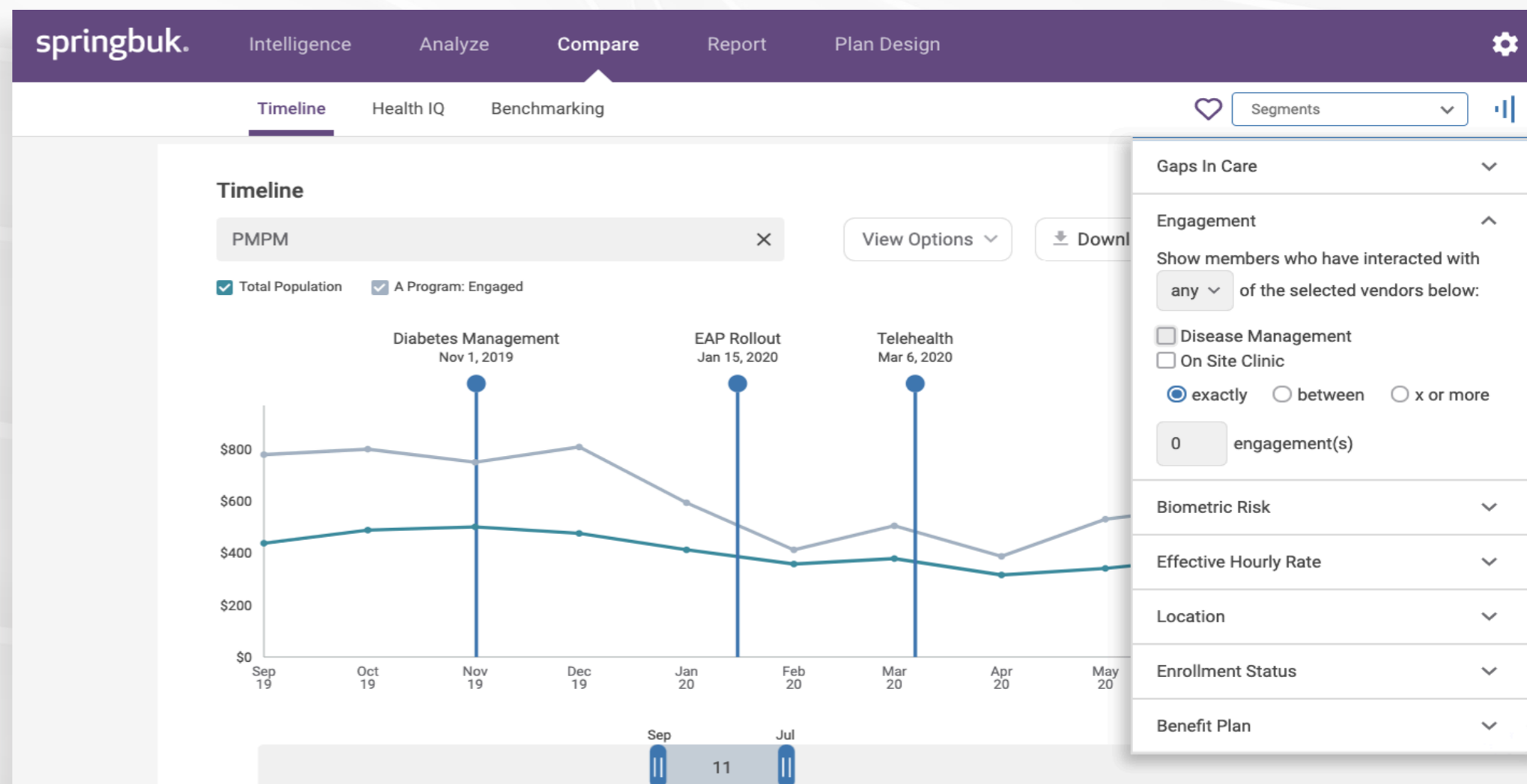


You can track important program and intervention dates in Timeline to see their subsequent impact.

# 2

## Objectively track program impact

Isolate cohorts of employees engaged in your programs and compare them over time



You can filter your population into cohorts that are engaged with your health programs and assess program impact.

3

Report on the potential impact of changes you have implemented

The screenshot shows the Springbuk 'Report Builder' interface for a 'Diabetes Program Report Impact Analysis'. The dashboard includes several key metrics and visualizations:

- Average Age:** 42 (Period: Sep 19 - Aug 20 | Population: 3757)
- Chronic Condition Gaps In Care:** 662 Noncompliant Members (18%). Savings Opportunity: \$2,967,982.
- Member Breakdown (Donut Chart):**
  - Employee: 393 Members (59%)
  - Spouse: 239 Members (36%)
  - Dependent: 30 Members (5%)
- Line Chart (PMPM):** Compares Total Population, A Program: Engaged, and A Program: Not Engaged from Sep to Aug. Jul 2020 data: A Program: Not Engaged (\$1,043), A Program: Engaged (\$485), Total Population (\$512).

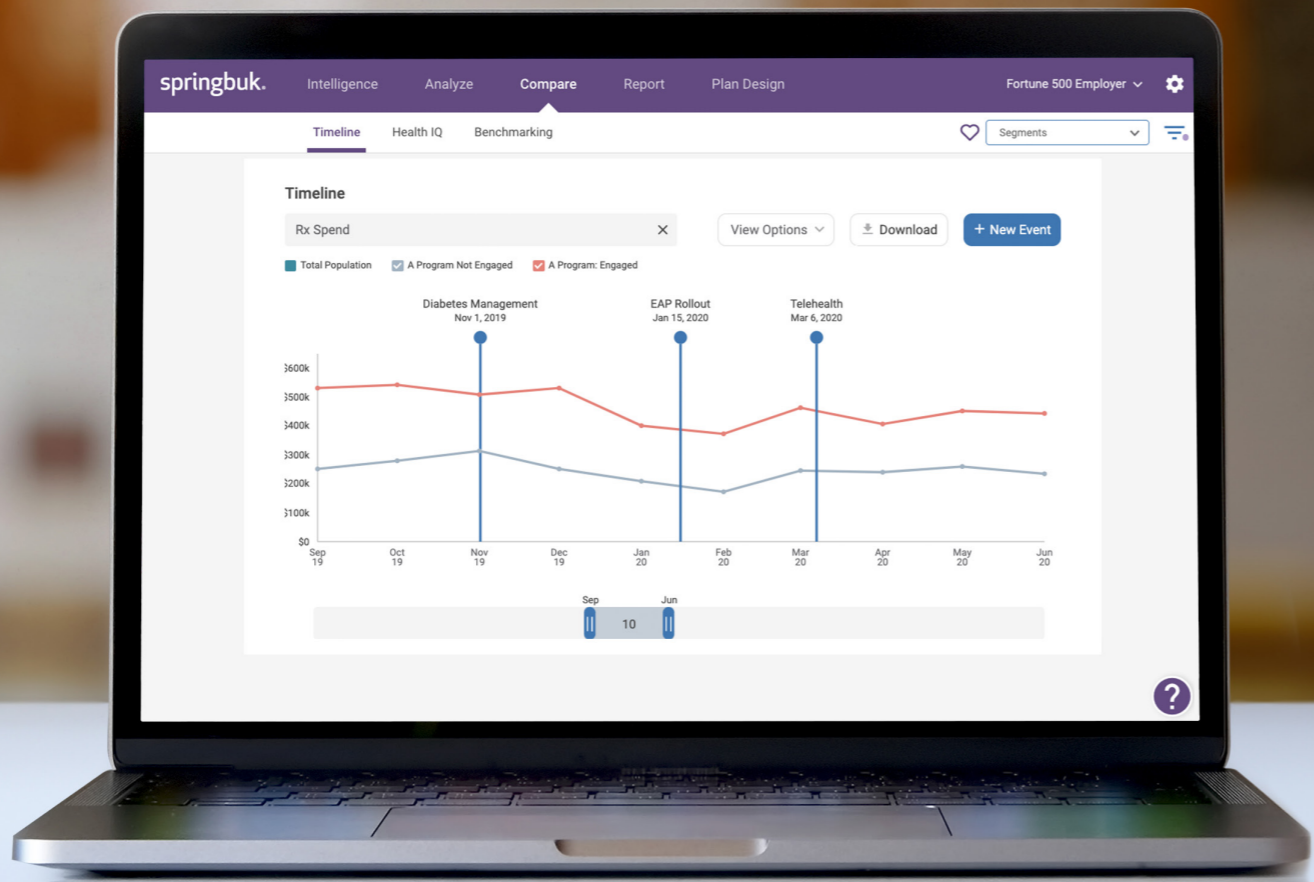
At the bottom, a text box states: 'Cost of members engaged in the diabetes program is less than that of non-engaged diabetics.'

You can easily build reports by clicking to add the elements you want to display from Timeline, and rearrange based on the information that's most important to you.

# Track Progress to Keep Members on Track

For example, if you noticed an increase in ER utilization for non-urgent visits, and you took action by implementing an increased ER copay, you could see how the number of ER visits per 1,000 members changed after the copay had gone into effect.

**Springbuk Timeline can monitor these changes over time**, so you know when to re-engage with your population to keep members on track with health-related behaviors. Finally, you can visually assess the impact of programs and strategies by comparing cohorts and success metrics over time.



# A World of Insight at Your Fingertips

To see how Springbuk Timeline can help you associate positive health outcomes with the plan design changes you've made, request a personal walkthrough at [springbuk.com/request](https://springbuk.com/request)

